



Publié sur REEA (<http://ree-auvergne.org>)

[Accueil](#) > CRESNA

CRESNA

277 Rue de l'Oradou
63000

Clermont-Ferrand

Cresna - Expertise et médiation autour de l'Alimentation [1]

contact.cresna@gmail.com [2]

0473266880

Contact: Sarah BOIVIN



Statut social:

SCOP

Actions:

Animations scolaires

Animation ACM/Loisirs

Formation

Visites guidées

Conception d'outils pédagogiques

Accompagnement de projets

Evènementiels

Conférences

Centre de ressources

Information - sensibilisation

Expertises - études

Autres

Thème(s):

Alimentation

Biodiversité

Consommation

Déchet

Développement Durable

Eau

Jardins

Pédagogie - Education - Formation

Santé Environnement

Participants:

Tout public

Accueil public:

Sur site

Restauration

Salles de réunion/formation


Jardins

Autres

Territoires d'intervention:

03 - Allier
15 - Cantal
43 - Haute-Loire
63 - Puy de Dôme
Rayonnement national

Attacher des fichiers:

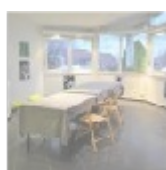
 [presentation_cresna.pdf](#) [3]

En image:



[4]

«



»

• [Mentions légales](#)

• [Aide](#)

• [Plan du site](#)

• [Contact](#)

URL source: <http://ree-auvergne.org/structure/cresna>

Liens

[1] <http://www.cresna-animalim.com>

[2] <mailto:contact.cresna@gmail.com>

[3] http://ree-auvergne.org/sites/default/files/acteurs/presentation_cresna.pdf

[4] [http://ree-auvergne.org/sites/default/files/styles/1280x960/public/acteurs/dsc_0101.jpg?](http://ree-auvergne.org/sites/default/files/styles/1280x960/public/acteurs/dsc_0101.jpg?itok=1H44UQLU&slideshow=true&slideshowAuto=true&slideshowSpeed=4000&speed=350&transition=elastic)

[itok=1H44UQLU&slideshow=true&slideshowAuto=true&slideshowSpeed=4000&speed=350&transition=elastic](http://ree-auvergne.org/sites/default/files/styles/1280x960/public/acteurs/dsc_0101.jpg?itok=1H44UQLU&slideshow=true&slideshowAuto=true&slideshowSpeed=4000&speed=350&transition=elastic)

[5] [http://ree-auvergne.org/sites/default/files/styles/1280x960/public/acteurs/dsc_0082.jpg?](http://ree-auvergne.org/sites/default/files/styles/1280x960/public/acteurs/dsc_0082.jpg?itok=BWGLw9K4&slideshow=true&slideshowAuto=true&slideshowSpeed=4000&speed=350&transition=elastic)

[itok=BWGLw9K4&slideshow=true&slideshowAuto=true&slideshowSpeed=4000&speed=350&transition=elastic](http://ree-auvergne.org/sites/default/files/styles/1280x960/public/acteurs/dsc_0082.jpg?itok=BWGLw9K4&slideshow=true&slideshowAuto=true&slideshowSpeed=4000&speed=350&transition=elastic)

[6] [http://ree-auvergne.org/sites/default/files/styles/1280x960/public/acteurs/dsc_0119.jpg?](http://ree-auvergne.org/sites/default/files/styles/1280x960/public/acteurs/dsc_0119.jpg?itok=IG5PvrCo&slideshow=true&slideshowAuto=true&slideshowSpeed=4000&speed=350&transition=elastic)

[itok=IG5PvrCo&slideshow=true&slideshowAuto=true&slideshowSpeed=4000&speed=350&transition=elastic](http://ree-auvergne.org/sites/default/files/styles/1280x960/public/acteurs/dsc_0119.jpg?itok=IG5PvrCo&slideshow=true&slideshowAuto=true&slideshowSpeed=4000&speed=350&transition=elastic)

[7] [http://ree-auvergne.org/sites/default/files/styles/1280x960/public/acteurs/dsc_0013.jpg?itok=-](http://ree-auvergne.org/sites/default/files/styles/1280x960/public/acteurs/dsc_0013.jpg?itok=-2xLGWZN&slideshow=true&slideshowAuto=true&slideshowSpeed=4000&speed=350&transition=elastic)

[2xLGWZN&slideshow=true&slideshowAuto=true&slideshowSpeed=4000&speed=350&transition=elastic](http://ree-auvergne.org/sites/default/files/styles/1280x960/public/acteurs/dsc_0013.jpg?itok=-2xLGWZN&slideshow=true&slideshowAuto=true&slideshowSpeed=4000&speed=350&transition=elastic)